

# Low Productivity Workers Contribute for Approximately 90 Minutes each Workday



Research conducted and validated by  
third-party Data Science team, in  
partnership with the Prodoscore  
Research Council

Published June 24, 2021

[prodoscore.com/prodoscore-research-council/](https://prodoscore.com/prodoscore-research-council/)



# Prodoscore Data Set

TIMEFRAME: January 2020 - April 2021

3,000

**EMPLOYEE  
RECORDS**

140

**ORGANIZATIONS**

21,700,000

**DATA POINTS**

MS 365 +  
Google  
Workspace

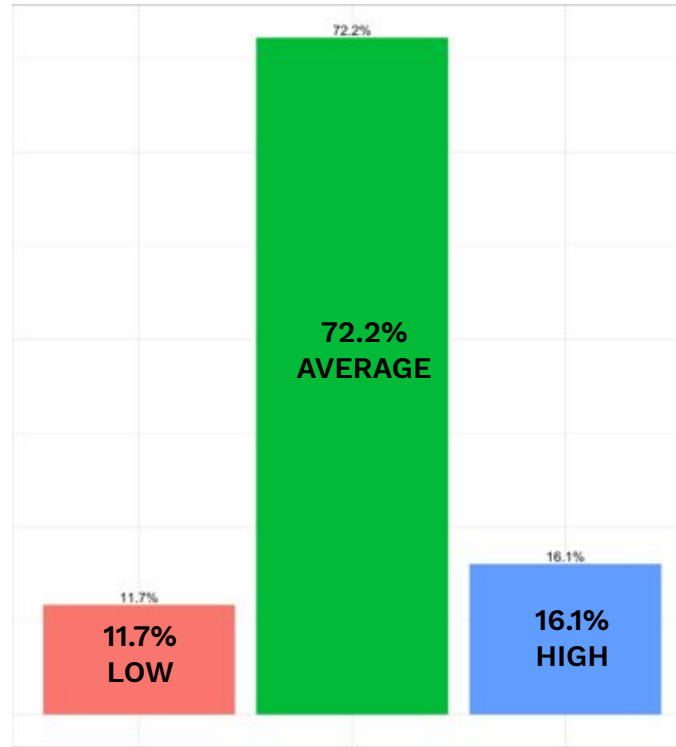
**OFFICE SUITE**

All subsequent data validated by third party Data Science team for the  
Prodoscore Research Council



# Distribution of Productivity

There are 3 groups of employees within organizations - those with low, average, and high productivity



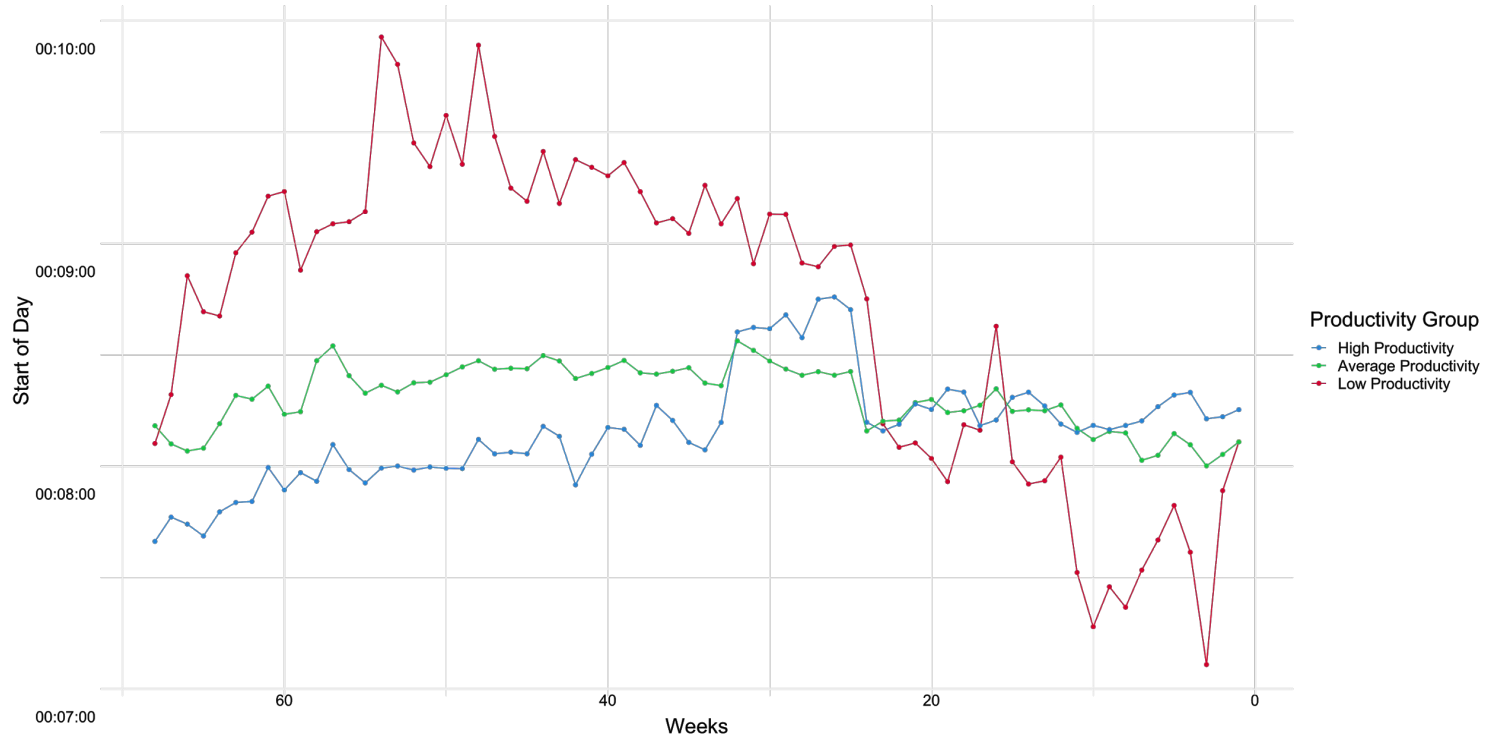
# Hours Worked by Productivity Group

<b>Prodoscore</b>	<b>Average Hours Worked</b> (based on first/last activities)	<b>Total Accounted for Hours</b>	<b>% of Day Gap Time</b>
Low <40	7 h 53 min	1 h 35 min	79.74%
Average	9 h 26 min	3 h 37 min	61.71%
High >75	9 h 53 min	4 h 23 min	55.51%
Baseline	9 h 29 min	3 h 38 min	61.47%



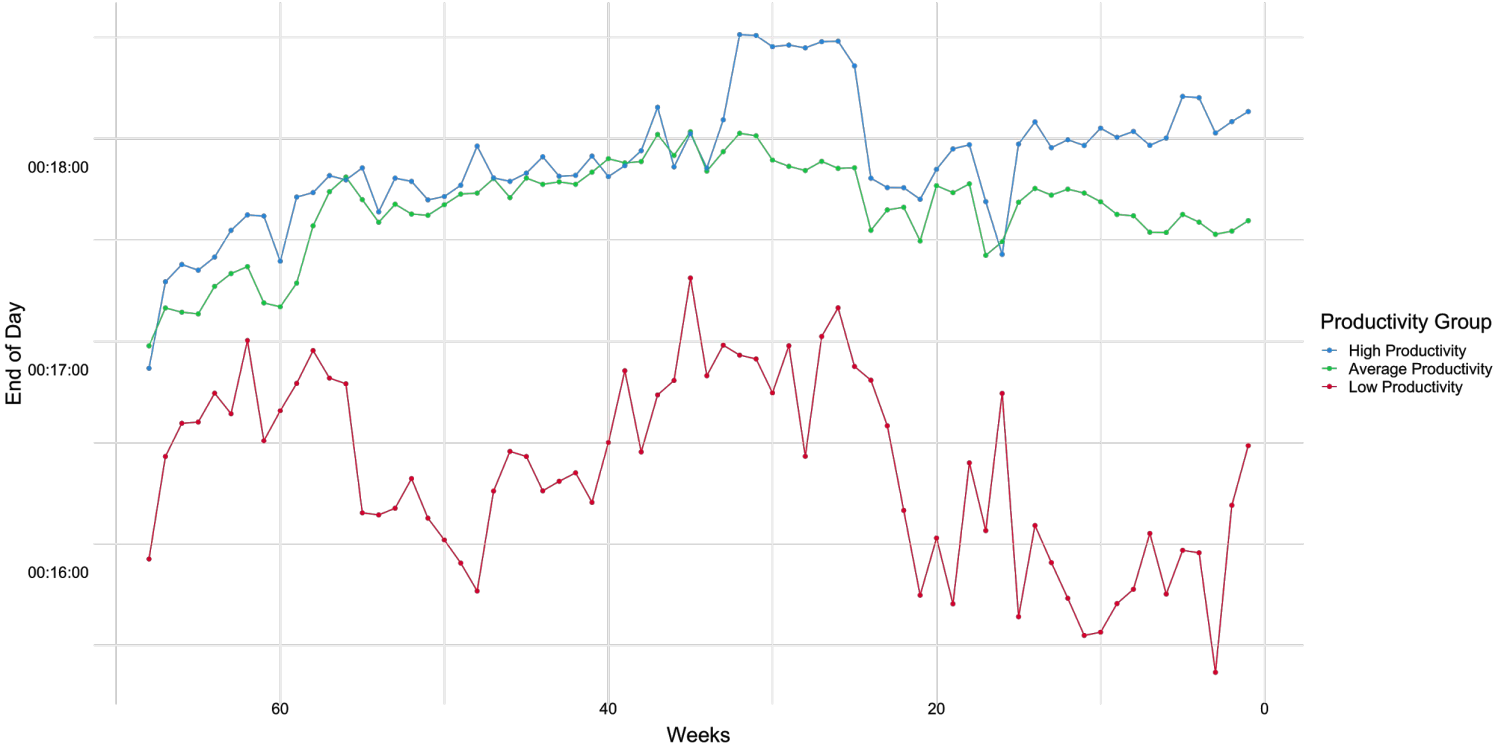
# Differences in Start Times Across Groups

On average, employees with low productivity start the day later



# Differences in End Times Across Groups

On average, employees with low productivity end the day earlier



# A Day in the Life

Engagement throughout the workday is quite different for low productivity employees versus average and high. Average and high productivity employees show similar engagement with various cloud-based applications.

The following slides showcase activity within 5 core business applications on an average workday.



EMAIL



CALENDAR



MESSAGING +  
CHAT



VOICE +  
VIDEO



CRM



DOCUMENTS



# A Day in the Life: Email

<b>Group</b>	<b>Average Daily Emails</b>
High Productivity	30.5
Average Productivity	13.6
Low Productivity	3.9







# A Day in the Life: Calendar Time

<b>Group</b>	<b>Average Minutes per Day Calendar Activity</b>
High Productivity	82.4
Average Productivity	72.8
Low Productivity	54.6





# A Day in the Life: Message + Chat

<b>Group</b>	<b>Average Daily Chat Send Rate</b>
High Productivity	13.6
Average Productivity	8.6
Low Productivity	3.4





# A Day in the Life: Voice + Video

<b>Group</b>	<b>Average Daily Voice + Video Activity</b>
High Productivity	47.8
Average Productivity	38.2
Low Productivity	23.7





# A Day in the Life: CRM

<b>Group</b>	<b>Average Daily CRM Inputs</b>
High Productivity	11.3
Average Productivity	7.5
Low Productivity	5.9





# A Day in the Life: Documents

<b>Group</b>	<b>Average Daily Documents Accessed</b>
High Productivity	3.6
Average Productivity	2.8
Low Productivity	1.6

